

King : A

Zusammensetzung: 100% Trevira CS® (Polyester)
 Gewicht: ca. 420 g/m
 Breite: 140 cm
 Lichtechtheit: Note 6 (DIN EN ISO 105-B02)
 Pilling: Note 4–5 (DIN EN ISO 12945/2)
 Reibechtheit: nass: 4–5 / trocken: 4–5
 Scheuerfestigkeit: 100.000 Touren (Martindale;
 DIN EN ISO 12947)
 Brandverhalten: DIN EN 1021: Teil 1/2,
 DIN 4102 B1, NF-P 92-503
 Klasse M1, BS 5852 IS 0+1,
 Crib 5, UN2 9175/87 (1. IM)

Composition: 100% Trevira CS® (polyester)
 Weight: approx. 420 g/m
 Width: 140 cm
 Light fastness: value 6 (DIN EN ISO 105-B02)
 Pilling: value 4–5 (DIN EN ISO 12945/2)
 Fastness to rubbing: wet: 4–5 / dry: 4–5
 Abrasion resistance: 100,000 rubs (Martindale;
 DIN EN ISO 12947)
 Flammability: DIN EN 1021: Part 1/2,
 DIN 4102 B1, NF-P 92-503
 class M1, BS 5852 IS 0+1,
 Crib 5, UN2 9175/87 (1. IM)



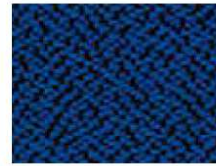
TREVIRA
CS



081.042
Rubinrot
Ruby red



081.021
Azurblau
Azure blue



081.020
Standardblau
Classic blue



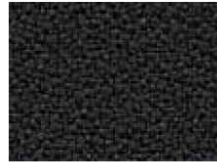
081.025
Wasserblau
Lagoon blue



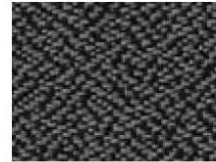
081.110
Dunkelgrün
Dark green



081.022
Dunkelblau
Deep blue



081.032
Steingrau
Stone grey



081.030
Grau
Metal grey



081.033
Schwarz
Midnight black

Leder/Leather : E

Nappaleder pigmentiert (Semi-Anilinleder)
 Anilingefärbtes leicht mit Pigmentfarbe abgedecktes
 Rindsoberleder, sehr strapazierfähig, vollnarbig.
 Lichtechtheit: Note 3 (DIN EN ISO 105-B02)
 Reibechtheit: nass: 4–5 / trocken: 4–5
 (DIN EN ISO 11640)
 Brandverhalten: DIN EN 1021: Teil 1/2

Pigmented Nappa leather (semi-aniline leather)
 Aniline dyed cowhide leather with light pigment
 dyeing, very hard wearing, full-grain.
 Light fastness: value 3 (DIN EN ISO 105-B02)
 Fastness to rubbing: wet: 4–5 / dry: 4–5
 (DIN EN ISO 11640)
 Flammability: DIN EN 1021: Part 1/2



001.069
Terrabraun
Terra brown



001.035
Graphitgrau
Graphite



001.033
Schwarz
Midnight black

